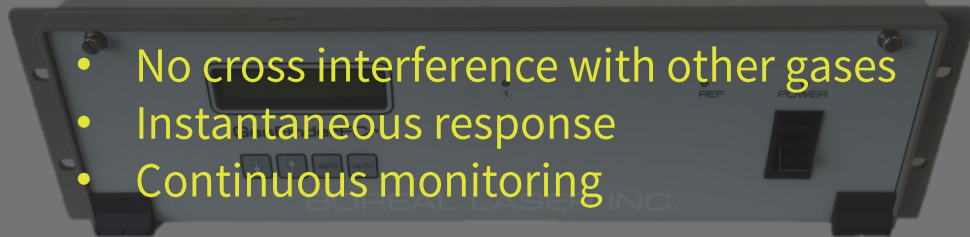




BOREAL

GasFinder2-FCr (FIBRE-COUPLED RACK MOUNTED)



- No cross interference with other gases
- Instantaneous response
- Continuous monitoring

SET

FORGET

DETECT

BOREAL

GasFinder2-FCr

(FIBRE-COUPLED RACK MOUNTED)



WHAT IT DOES

- Provides **immediate and unambiguous** detection of the target gas in the ambient atmosphere
- Our technology **counts every target molecule** in the measurement path to give a ppm-m concentration

HOW IT WORKS

- The **analyzer is housed inside** a climate controlled and non-hazardous building
- **Fibre optic cable** carries the laser light from the analyzer to the remotely mounted measurement head
- The laser passes across the **active measurement path**
- The laser light is then collected and the signal is carried back to the analyzer via **coaxial cable**
- The ppm-m concentration is then transferred by RS-232 serial communication or 4-20mA current loop

GASES AVAILABLE

- Methane (CH₄)
- Carbon Monoxide (CO)
- Carbon Dioxide (CO₂)
- Hydrogen Sulfide (H₂S)
- Hydrogen Chloride (HCl)
- Hydrogen Cyanide (HCN)
- Hydrogen Fluoride (HF)
- Ammonia (NH₃)
- Acetylene (C₂H₂)
- Ethylene (C₂H₄)
- Nitrous Oxide (N₂O)
- Water Vapour (H₂O)

MEASUREMENT HEADS



OP1 HEAD



OP3 HEAD



STACK/DUCT PROBE



EXTRACTIVE GAS CELL



BULLS-EYE CELL



INSERTABLE PROBE

BENEFITS

- **No Interference** with other gases and **No False Alarms**
- Provides **continuous monitoring**
- **Fast Response Times and No Memory Effects:** much faster response than other gas detection technologies
- Provides the **best return on investment** compared to any other system
- Measurement head can be used in **all weather conditions**
- **Minimal Maintenance:** checks internal reference cell every minute, robust design, and requires no consumables
- **Low cost of ownership**
- **Free and Unlimited** phone and email support

SPECIFICATIONS

- **Response Time (Scan Rate):** 1 reading/sample per second
- **Sensitivity:** specification varies depending on gas and application
- **Accuracy:** 2% of reading
- **Uncertainty:** 5% of accuracy
- **Dynamic Range:** 4 orders of magnitude
- **Measurement Path Length:** 0.1 to 750m (head specific)
- **Light Source:** Semiconductor Diode Laser
- **Typical Laser Output:** ~10mW
- **Eye Safety:** Class I or Class IIIa (ANSI) & FDA/CDRH approved
- **Analyzer Weight:** 10.0 kg (22.0 lbs)
- **Analyzer Dimensions:** (LxWxH): 440 x 380 x 130mm (17.3 x 15.0 x 5.1in)
- **Data Output:** Serial Communication (RS-232) & 4-20 mA current loop
- **Power Requirement:** 1A @ 110 to 220 VAC
- **Ambient Temperature:** 5°C to 35°C (41°F to °F)
- **Hazardous Area Classification:** CSA North American Class 1, Div 2, Groups A, B, C, D, ATEX Zone 1

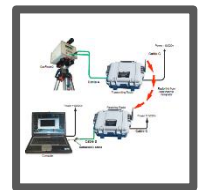
ACCESSORIES



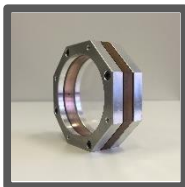
RAIN/DUST ENCLOSURE



GASVIEW



WIRELESS COMM.



RESPONSE CELL



DIAGNOSTIC KIT



3D ANENOMETER