



BOREAL

GasFinder2-MC (MULTI-CHANNEL)

- Remotely mount measurement heads
- Lowest cost of ownership
- Accurate and reliable

OPEN-PATH

STACK/DUCT

INSERTABLE

EXTRACTIVE

boreal-laser.com

REMOTE PRECISION. SURE DECISION.

BOREAL

GasFinder2-MC (MULTI-CHANNEL)



WHAT IT DOES

- Provides **immediate and unambiguous** detection of the target gas in the ambient atmosphere
- Our technology **counts every target molecule** in the measurement path to give a ppm-m concentration

BENEFITS

- **No interference** with other gases
- **No memory effects**
- **Data collection and interpretation** is simple and intuitive
- Built for **winter and summer**
- **Minimal Maintenance**
- Sophisticated **self-diagnostics**
- Can provide an **independent sample or reading every second**
- **Free and unlimited** phone and email support

HOW IT WORKS

- The **analyzer is housed inside** a climate controlled and non-hazardous building
- **Fibre optic cable** carries the laser light from the analyzer to the remotely mounted measurement heads
- The laser passes across the **active measurement path**
- The laser light is then collected and the signal is carried back to the analyzer via **coaxial cable**
- The ppm concentration is then transfer to the communication module(s)

MEASUREMENT HEADS



OP1 HEAD



OP3 HEAD



STACK/DUCT PROBE



EXTRACTIVE GAS CELL



BULLS-EYE CELL



INSERTABLE PROBE

GASES AVAILABLE

- Methane (CH₄)
- Carbon Monoxide (CO)
- Carbon Dioxide (CO₂)
- Hydrogen Sulfide (H₂S)
- Hydrogen Chloride (HCl)
- Hydrogen Cyanide (HCN)
- Hydrogen Fluoride (HF)
- Ammonia (NH₃)
- Acetylene (C₂H₂)
- Ethylene (C₂H₄)
- Nitrous Oxide (N₂O)
- Water Vapour (H₂O)

SPECIFICATIONS

- **Number of Channels:** 2,4,8
- **Response Time (Scan Rate):** 1 reading/sample per second
- **Sensitivity:** specification varies depending on gas and application
- **Accuracy:** 2% of reading
- **Uncertainty:** 5% of accuracy
- **Dynamic Range:** 4 orders of magnitude
- **Measurement Path Length:** 0.1 to 750 m (head specific)
- **Data I/O:** RS-232/485, MODBUS, TCP/IP, 4-20 mA, Dry-Contact Relays
- **Light Source:** Semiconductor Diode Laser
- **Typical Laser Output:** ~10mW
- **Eye Safety:** Class I or Class IIIa (ANSI) & FDA/CDRH approved
- **Analyzer Weight:** 12.0 kg (26.4 lbs)
- **Analyzer Dimensions:** (LxWxH): 440 x 380 x 130mm (17.3 x 15.0 x 5.1in)
- **Data Output:** Serial Communication (RS-232)
- **Power Requirement:** 1A @ 100 to 250 VAV
- **Ambient Temperature:** 10°C to 35°C (50°F to 86°F)
- **Hazardous Area Classification:** CSA North American Class 1, Div 2, Groups A,B,C,D, ATEX Zone

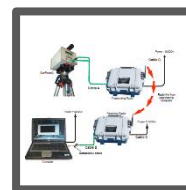
ACCESSORIES



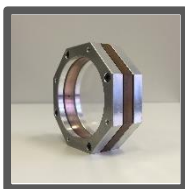
RAIN/DUST ENCLOSURE



GASVIEW



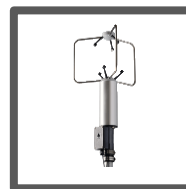
WIRELESS COMM.



RESPONSE CELL



DIAGNOSTIC KIT



3D ANEMOMETER